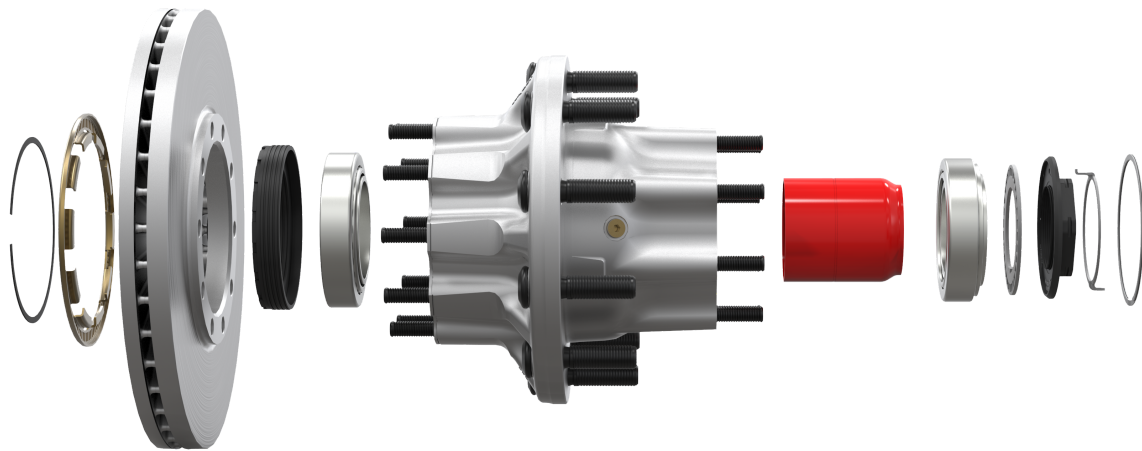


# CONMET®



## ConMet Wheel Hubs

ConMet Aftermarket hub assemblies are the most advanced wheel ends on the market, featuring ConMet wheel seals and bearings. The most advanced wheel ends on the market, including industry standard PreSet and PreSet Plus heavy duty pre-adjusted hub assemblies. For more than 20 years PreSet hubs have been the go-to wheel end for commercial vehicles in North America. By replacing your wheel ends with genuine PreSet hubs, you get the following benefits:

- Increased uptime
- Reduced labor costs
- Less potential for errors during installation
- Reduced liability

## Upgrade your PreSet Hub to a PreSet Plus Hub with a PreSet Plus ConMet Spindle Nut

ConMet's spindle nut is the market leader in both initial clamp and clamp load retention over the life of the wheel end. When compared to competitors, up to 2.5X initial clamp load is achieved upon installation and the clamp load retention exceeds 90%. The end result is maximum wheel end life.

Additionally, the PreSet Plus Spindle Nut offers the following benefits:

- 5 year/500,000 mile warranty on Aftermarket PreSet Hubs when installed with the PreSet Plus Spindle Nut
- Once the torque is met, no adjustment is required to engage the lock ring
- It is the industry's only nut that provides the visibility to know when the ring is positively engaged
- The PTFE coated material maximizes the clamp force when tightening the nut
- The lock ring is in a relaxed state when engaged
- Acts as a hub puller when the hub needs be removed simplifying the removal process
- Acts as assembly aid during installation, keeping the outboard bearing cone secure in the hub and preventing misalignment of the seal
- The precision machined, hardened, lock washer ensures full surface contact and eliminates wear

### ConMet® PreSet® Hub and Rotor

ConMet



Watch on

## QUICK LINKS

**Why PreSet Technology?** (<https://mailchi.mp/1804604aaf40/conmetconnectionpart1-641921>)

**Why PreSet Plus Spindle Nut?** (<https://mailchi.mp/bc8f336647ea/conmetconnectionpart1>)

## Alliance RSL

### Wheel End Products Brochure

([https://cdn.intelligencebank.com/us/share/ONnl/rqrg/RYRdP/original/BRCH\\_EN\\_WheelEndProducts\\_20230607\\_WEE](https://cdn.intelligencebank.com/us/share/ONnl/rqrg/RYRdP/original/BRCH_EN_WheelEndProducts_20230607_WEE))

### ConMet Tractor & Trailer RSL

([https://cdn.intelligencebank.com/us/share/ONnl/vqA3/kj2Z/original/FLYER\\_AM\\_ConMetComboRSL](https://cdn.intelligencebank.com/us/share/ONnl/vqA3/kj2Z/original/FLYER_AM_ConMetComboRSL))

### ConMet Regional Sales Managers Map

([https://cdn.intelligencebank.com/us/share/ONnl/vqA3/Z6MX/original/FLY\\_RegionalSalesMap\\_20230112](https://cdn.intelligencebank.com/us/share/ONnl/vqA3/Z6MX/original/FLY_RegionalSalesMap_20230112))

ConMet Website

Why Choose ConMet Hubs ([https://adsal.dtnaapps.com/AssetLibrary/3544-conmet\\_hubs\\_video-2020-08-27.mp4](https://adsal.dtnaapps.com/AssetLibrary/3544-conmet_hubs_video-2020-08-27.mp4))

FIND A REPLACEMENT HUB OR COMPONENT USING THE CONMET APP (<https://conmet.com/app>)

Download the mobile version of the ConMet app (<https://conmet.com/app/>)

TAKE THE CONMET ONLINE WHEEL END TRAINING (<https://forms.monday.com/forms/94ecf45055c8033fa38a8863b2334a83#/login>)

## Product Highlights

Available in aluminum or iron for truck and trailer

Pre-adjusted bearings for longer life and better performance

Precision-stamped ABS ring comes standard

Extended life seal protects internal components

Easy access fill hole means lubricants can be installed quickly and easily

## Truck Hubs

Part Number	Hub Flange Offset (In)	Hub Load Rating (Lbs)	GAWR (Lbs)	Hub Material	Wheel Stud Standout (In)	Steel / Alum Wheels	Wheel Stud	Weight (Lbs)	Hub Cap BC (In)
CM 10082200	5.44	6,600	13.2K	Alum	2.47	Steel	103193	37	4.5
CM 10082201	5.44	6,600	13.2K	Alum	2.92	Alum	102188	37.6	4.5
CM 10082202	5.44	7,350	14.6K	Alum	2.47	Steel	107477	44.7	4.5
CM 10082203	5.44	7,350	14.6K	Alum	2.92	Alum	107479	45.5	4.5
CM 10082204	5.44	7,350	14.6K	Iron	2.6	Steel	10001405	50.5	4.5
CM 10082205	5.44	7,350	14.6K	Iron	3.06	Alum	10001399	51.2	4.5
CM 10082206	5.06	6,600	13.2K	Alum	2.47	Steel	103193	36.9	4.5
CM 10082207	5.06	6,600	13.2K	Alum	2.92	Alum	102188	37.5	4.5
CM 10082208	5.06	7,350	14.6K	Alum	2.47	Steel	102033	40.2	4.5
CM 10082209	5.06	7,350	14.6K	Alum	2.97	Alum	102290	41	4.5
CM 10082210	5.06	7,350	14.6K	Iron	2.6	Steel	10001405	52.5	4.5
CM 10082211	5.06	7,350	14.6K	Iron	3.06	Alum	10001399	53.2	4.5
CM 10082212	4.29	10,000	20K	Alum	2.65	Steel	107478	54.9	5.56
CM 10082213	4.29	10,000	20K	Alum	3.27	Alum	10001331	55.8	5.56
CM 10082214	4.29	11,500	23K	Iron	2.76	Steel	10001399	74.4	5.56
CM 10082215	4.29	11,500	23K	Iron	3.3	Alum	10005301	75.8	5.56

Part Number	Hub Load Rating (Lbs)	GAWR (Lbs)	Inner Bearing Combination	Outer Bearing Combination	Hub Material	Stud Standout	Steel / Alum Wheels	Weight (Lbs)	Wheel Stud
-------------	-----------------------	------------	---------------------------	---------------------------	--------------	---------------	---------------------	--------------	------------

CM 10082216	11,500	23K	592A PS / 594A PS	572 PS / 580 PS	Alum	2.94	Steel	50.0	10001329
CM 10082216	11,500	23K	592A PS / 594A PS	573 PS / 580 PS	Alum	3.81	Alum	51.4	10001331
CM 10082218	13,000	26K	592A PS / 594A PS	574 PS / 580 PS	Iron	3.06	Steel	76.5	10018436
CM 10082219	13,000	26K	592A PS / 594A PS	575 PS / 580 PS	Iron	3.97	Alum	77.9	10018435
CM 10082220	11,500	23k	592A PS / 594A PS	572 PS / 580 PS	Alum	2.94	Steel	49.6	10001329
CM 10082221	11,500	23k	592A PS / 594A PS	573 PS / 580 PS	Alum	3.81	Alum	51.0	10001331
CM 10082222	13,000	26k	592A PS / 594A PS	574 PS / 580 PS	Iron	3.06	Steel	60.1	10018436
CM 10082223	13,000	26k	592A PS / 594A PS	572 PS / 580 PS	Iron	3.97	Alum	61.5	10018435

## Trailer Hubs

Part Number	Type Of Hub	Part Number, Bulk (24 Ea.)	TN / TP	Hub Load Rating (Lbs)	GAWR (Lbs)	Hub Material	Wheel Stud Standout (In)	Steel / Alum Wheels	Wheel Stud	Weight (Lbs)
CM 10082224	PreSet	10082224B	TN	11,500	23k	Alum	2.94	Steel	102188	41.5
CM 10082225	PreSet	10082225B	TN	11,500	23k	Alum	3.8	Alum	102190	42.8
CM 10082226	PreSet	10082226B	TN	11,500	23k	Iron	3.17	Steel	10001399	51.6
CM 10082227	PreSet	10082227B	TN	11,500	23k	Iron	4.08	Alum	10001400	53
CM 10082228	PreSet	10082228B	TP	12,500	25k	Alum	2.94	Steel	102290	48.5
CM 10082229	PreSet	10082229B	TP	12,500	25k	Alum	3.81	Alum	102292	49.8
CM 10082230	PreSet	10082230B	TP	12,500	25k	Iron	3.17	Steel	10001399	59.7
CM 10082231	PreSet	10082231B	TP	12,500	25k	Iron	4.08	Alum	10001400	61.1
CM 10082249	Conventional	10082249B	TN	11,500	23k	Alum	2.94	Steel	102188	33
CM 10082250	Conventional	10082250B	TN	11,500	23k	Alum	3.8	Alum	102190	34
CM 10082251	Conventional	10082251B	TN	11,500	23k	Iron	3.17	Steel	10001399	42.9
CM 10082252	Conventional	10082252B	TN	11,500	23k	Iron	4.08	Alum	10001400	44.3

CM 10082253	Conventional	10082253B	TP	12,500	25k	Alum	2.94	Steel	102290	36.5
CM 10082254	Conventional	10082254B	TP	12,500	25k	Alum	3.81	Alum	102292	37.8
CM 10082255	Conventional	10082255B	TP	12,500	25k	Iron	3.17	Steel	10001399	47.7
CM 10082256	Conventional	10082256B	TP	12,500	25k	Iron	4.08	Alum	10001400	49.1

## General Product Information

### Seals

ConMet's specially designed multi-zone labyrinth creates superior protection and low friction, and the wide inside diameter with rubber ribs ensures proper sealing capability. ConMet's wheel seals keep harmful contaminants out and protective lubricants in, where they can work safely and smoothly.

### Bearings

ConMet Bearings are superior to standard bearings because they are designed for optimized contact and reduced stress concentration, resulting in better rolling contact and less friction.

Additional benefits:

- Extended life over standard bearings
- Optimized contact and reduced stress concentration
- Improved rolling contact and reduced friction
- Lower operating temperature and improved lubrication
- More effectively withstands heavy cornering and misalignment

### Service Kits

Both ConMet and Alliance service kits enable technicians to return PreSet and PreSet Plus hubs to their factory condition with OEM genuine components.

## Warranty Information

### Aftermarket PreSet Hubs When Installed with PreSet Plus Spindle Nut

5 Years / 500,000 Mile (<https://cdn.intelligencebank.com/us/share/ONnl/b4Xk/qy6/original/Limited+Warranty+-+Aftermarket+101-1081-G005+%2810045532%29+Rev+F>)

### Aftermarket PreSet Hub Assembly Warranty

3 Years / 350,000 Mile (<https://cdn.intelligencebank.com/us/share/ONnl/b4Xk/qy6/original/Limited+Warranty+-+Aftermarket+101-1081-G005+%2810045532%29+Rev+F>)

### ConMet Aftermarket Hub Component Warranties

PreSet/PreSet Plus Hub Rebuild Kits: 2 Years / 200,000 Mile (<https://cdn.intelligencebank.com/us/share/ONnl/b4Xk/qy6/original/Limited+Warranty+-+Aftermarket+101-1081-G005+%2810045532%29+Rev+F>)

### Alliance Hub Component Warranties

Alliance Spindle Nuts: 1 Year / 100,000 Mile

Alliance Seals: 1 Year / 100,000 Mile

Alliance Hub Seal & Spacer Kits: 2 Years / 200,000 Mile

Last updated: Wednesday, 24 April 2024 06:48 PM

[^Back to Top](#)